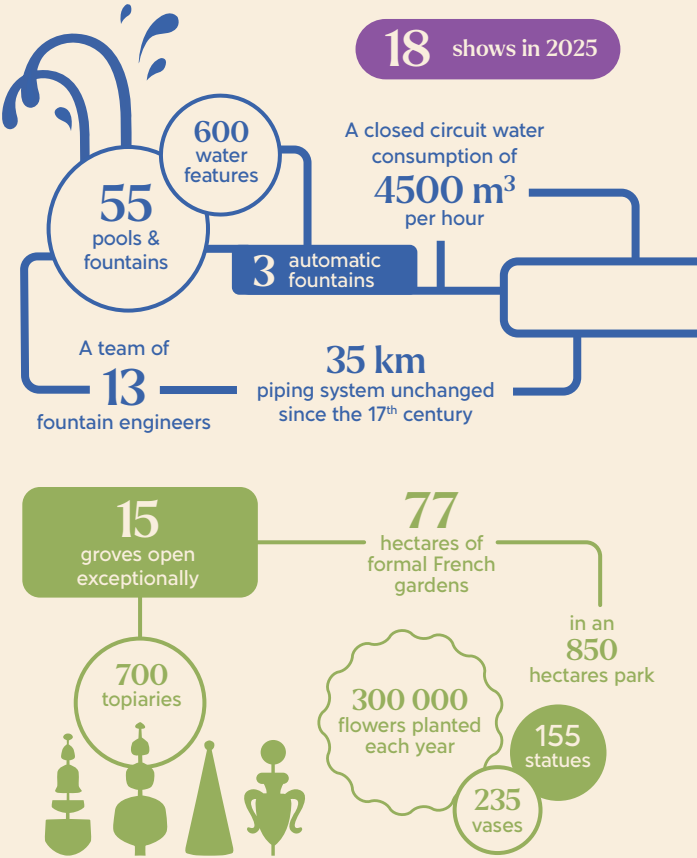


THE NIGHT FOUNTAINS SHOW  
IN FIGURES



SINCE 2014, CHÂTEAU DE VERSAILLES SPECTACLES HAS DEVELOPED A VAST AND AMBITIOUS PROJECT TO ILLUMINATE THE NIGHT FOUNTAINS SHOW.

After the lighting of the Grand Perspective (Terraces, Latona's Fountain and Parterre, Great Lawn, Apollo's Fountain), the North Axis (North Parterre, Dragon and Neptune Fountains, Yew and Marmousets Alleys), the façades of the North and South Wings, and the South Parterre, it is now the façade of the central building that, in 2025, has benefited from an overhaul of their lighting, with the support of CITEOS.

Fountains and pools, statues and vegetation are enhanced by ingenious lighting installations designed by lighting designer Laurent Fachard.

Sponsors of the Night Fountains Show:  
**CITEOS**

GROVES & FOUNTAINS

The groves of Versailles were designed during Louis XIV's reign as open air drawing rooms concealed at the heart of the wooded areas of the gardens. One went there for refreshments and light meals, to listen to music or dance. The King could satisfy his taste for gambling and performing arts in these venues intended solely for entertainment and celebrations. Decorated with fountains, vases and statues, accessed through discreet walks, these groves bring surprise and creativity within the Royal Garden.

GREAT PERSPECTIVE

In the Park of the Palace, this grandiose stretch of landscape designed by André Le Nôtre in the 1660s goes from the Palace itself (the King's Bedchamber and the Hall of Mirrors) to the extremity of the Grand Canal. Apollo, the emblematic figure of Louis XIV, is present everywhere in figurative or symbolic form.

MYD + Zimmer

GREAT LAWN

The Great Lawn, a vast lawn surrounded by an impressive cortege of marble statues, will be adorned with majestic flames from Groupe F, rhythmically punctuating the festive music and offering an astonishing perspective view of the Royal Garden.

LATONA'S FOUNTAIN

From the top of the steps of the Latona's Fountain, the visitor can look out over the Grand Perspective and admire, from the king's viewing point, a constellation of bubbles reflecting the day's last rays of sunshine. The statues of this recently restored fountain illustrate the legend of Diana and Apollo's mother protecting her children against the insults of the peasants of Lycia and demanding vengeance from Jupiter who changed them into frogs.

APOLLO'S FOUNTAIN

Newly restored

The final fireworks display in the fountain of Apollo's Chariot will take place at 11:30pm. Groupe F will be producing a finale visible all along the Grand Perspective, combining a fireworks display at the head of the Grand Canal and flames soaring from the Great Lawn.

Final Show - MYD

# ELECTRO NIGHT FOUNTAINS SHOW

CHÂTEAU DE VERSAILLES

SATURDAY, SEPTEMBER 20<sup>TH</sup> 2025

GROVES EXCEPTIONALLY OPEN,  
LIGHT AND MUSICAL DISPLAYS  
from 8:30pm to 11:25pm

WATER DISPLAYS  
from 8:30pm to 11:20pm

FINAL FIREWORKS - GROUPE F  
from 11:30pm to 11:45pm

Château de  
**VERSAILLES**  
Spectacles

CHÂTEAU DE VERSAILLES

Christmas  
AT CHÂTEAU DE VERSAILLES

Le  
Parcours  
du Roi

VISIT-SHOW

The magic of the Hall of Mirrors at night fall

December 13<sup>th</sup> 2025 - January 3<sup>th</sup> 2026

MUSICAL SEASON

Every year the Royal Opera and the Royal Chapel of Château de Versailles welcome the greatest international artists for an exceptional program of concerts, operas and ballets.

FULL PROGRAM ON OUR WEBSITE

INFORMATION - BOOKING  
+33 (0)1 30 83 78 89  
www.chateauversailles-spectacles.fr

Administrative address: Château de Versailles Spectacles  
CS 10509 - 78008 Versailles Cedex

@chateauversailles.spectacles @versaillesspectacles @CVSspectacles  
#GRANDESEAUXNOCTURNES

snfcconnect Le Parisien RTL france.tv

Illustration : © Eurydice Recapé - Backcover : © Agathe Poupeney. Do not litter.

SOUTH

ORANGERY

Built by Jules Hardouin-Mansart between 1684 and 1686, it consists of a large central vaulted gallery 150 meters long, prolonged by two side galleries located under the Hundred Steps staircase. 1 055 trees in tubs stay inside the building during winter months before being welcomed by the Orangery Parterre.

Tonight, experience a hypnotic sound and light installation: *Hulahoop*, by the Scale collective.

Grégory Sémah . Circles

BALLROOM GROVE

The Ballroom Grove was built by Le Nôtre and the fountain engineers of Louis XIV. Strollers will be able to enjoy a surprising play of lights accompanying the favourite music of the King and the miracle of the water pouring in cascades down the rocaille steps of the amphitheatre.

Mosey

MIRROR FOUNTAIN

Louis XIV commanda ce bassin en 1702. Dans l'esprit des fontaines de Le Nôtre, mais avec les moyens techniques modernes, des jeux d'eau et de lumière musicaux y sont présentés.

Victor Le Masne

KING'S GARDEN

The King's garden stands where the former Royal Island once stood, before being filled in the 19<sup>th</sup> century to house a garden planted with rare and exotic trees. Since 2025, it has also been illuminated thanks to a new lighting design imagined by Yves Caizergues.

COLONNADE GROVE

In the circular space of the Colonnade Grove designed by Jules Hardouin-Mansart, the sculptor Girardon placed one of the white marble masterpieces of Versailles. Pluto, the God of Hell, snatches Proserpine from the Earth, her mother, and carries her up into the sky, with lasers here creating unexpected shapes in the coloured smoke clouds.

Emma B

GIRANDOLE AND DAUPHIN'S GROVES

In these ravishing groves, let yourself be guided through a maze of winding paths where original light installations, inspired by nature are revealed.

NORTH

NEPTUNE FOUNTAIN

The Neptune fountain was dug out in the shape of a half-circle as in the ancient Greek theatres. Armed with his trident, Neptune, the god of the sea, sends gracious spouts of water into the sky.

Victor Le Masne

THREE FOUNTAINS GROVE

Lights and fountains create a magical mystery in one of the favourite groves of Louis XIV (he is said to have designed it), completed by Le Nôtre in 1679. Shells and rocaille features decorate the five levels of fountains from which statues are excluded so that all the visitor's attention is concentrated on the water attractions.

Victor Le Masne

WATER THEATER GROVE

The grove designed by Le Nôtre was restored in 2015 by landscape architect Louis Benech and artist Jean-Michel Othoniel. The Bassin des Enfants Dorés, near the Water Theater Grove, was created by Jules Hardouin-Mansart in 1709.

APOLLO'S BATH GROVE

Designed by Hubert Robert from 1776, this grove features a pre-romantic style with a remarkable rock sheltering sculptures of Apollo and the Muses by Marsy, Guérin, Girardon and Regnaudin, recovered from Louis XIV's Grotte de Thétis.

OBELISK GROVE

The grove features a large two-level rectangular pool with water jets forming a liquid obelisk, and is animated by four water staircases.

ENCELADUS GROVE

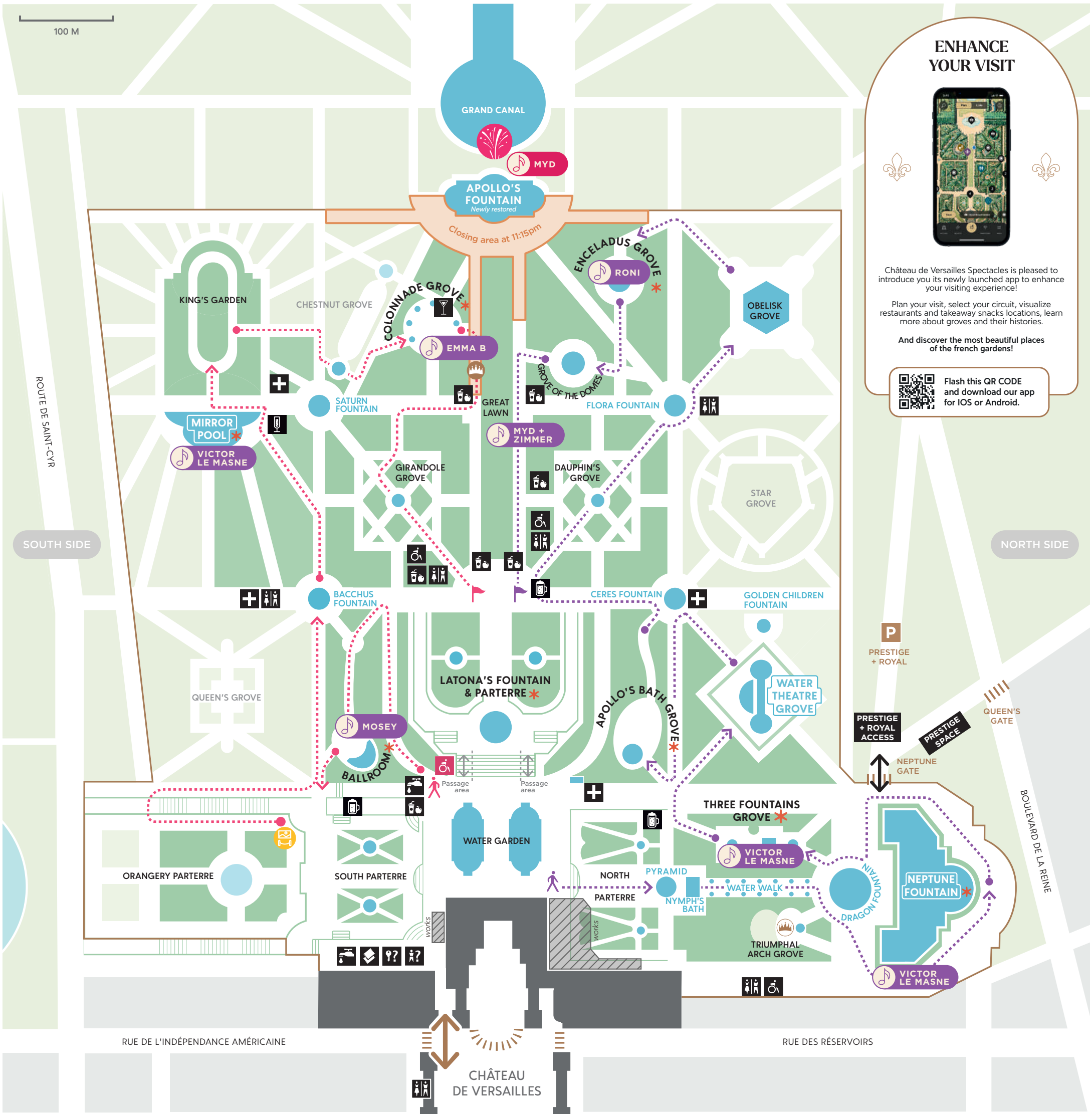
The grove designed by Le Nôtre in 1675 is home to a marvel of French Baroque sculpture: the giant Enceladus, a work in gilded lead by Marsy. It depicts Enceladus buried under rocks, punished by the gods of Olympus, in the style of the Lyrical Tragedy during the 17<sup>th</sup> century.

RONI

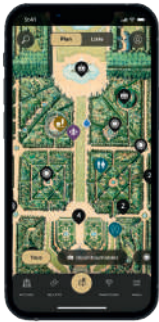
THE DOMES GROVE

The basin contains small fountains, from which water gushes. The water flows into the channel in the parapet and then as a thin sheet of water into the basin.





## ENHANCE YOUR VISIT



Château de Versailles Spectacles is pleased to introduce you its newly launched app to enhance your visiting experience!

Plan your visit, select your circuit, visualize restaurants and takeaway snacks locations, learn more about groves and their histories.

And discover the most beautiful places of the french gardens!



Flash this QR CODE and download our app for IOS or Android.

## SUGGESTED WALKS

To facilitate your stroll, we suggest two circuits that will allow you to discover the gardens easily. You can also organise your stroll to suit yourself.



**SOUTH**

**Suggested walk South side**  
Estimated time: 1h



**NORTH**

**Suggested walk North side**  
Estimated time: 1h30



After your stroll, return to the Great Perspective and watch the fireworks display over the Apollo's Chariot fountain from 11:30pm to 11:45pm.

**\* GROVES & FOUNTAINS NOT TO BE MISSED!**

## TONIGHT IN THE GARDENS

**GROVES EXCEPTIONALLY OPEN LIGHT AND MUSICAL DISPLAYS**  
with a soundtrack by:  
Emma B, Mosey, MYD, RONI, Victor Le Masne, Zimmer  
from 8:30pm to 11:25pm

**WATER DISPLAYS**  
from 8:30pm to 11:20pm

**Mirror Pool**  
Every 10 minutes

**Neptune Fountain**  
Every 15 minutes

**FIREWORKS FINAL SHOW**  
with a mix by MYD  
from 11:30pm to 11:45pm



Pyrotechnic show



Royal Square  
Location for the firework



Royal Space  
Triumphal Arch Grove



Fire artists



Sound and light installation:  
*Hulahoop*, by the Scale collective



Location for the firework  
for visitors with reduced  
mobility



Stairs



Entrance / Exit



Free toilets



Bar and restauration



Bar



Champagne bar



Snacks



Lost objets



Lost child



Facilities for visitors  
with reduced mobility



The Night Fountains  
Show, ticket office



Rescue



Drinking water

## NOTICE TO VISITORS

**No readmission after leaving the site.**

No picnics are allowed inside the paying area. It is forbidden to walk or sit on lawns or to lean on or touch statues.

The fountains' water is non-drinkable. Bathing is prohibited.

Please observe instructions given by hospitality staff.