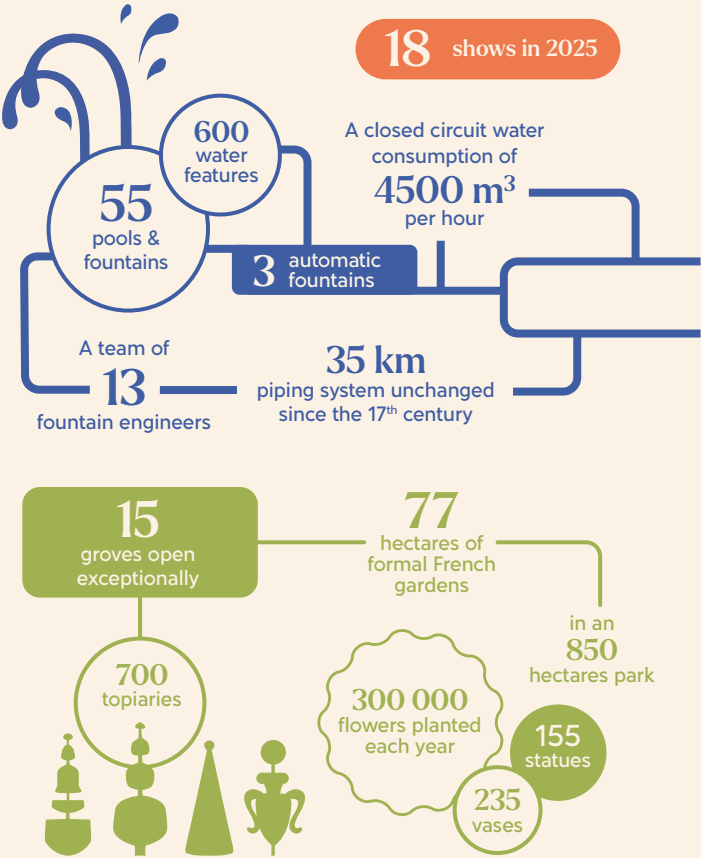


THE NIGHT FOUNTAINS SHOW
IN FIGURES



SINCE 2014, CHÂTEAU DE VERSAILLES SPECTACLES HAS DEVELOPED A VAST AND AMBITIOUS PROJECT TO ILLUMINATE THE NIGHT FOUNTAINS SHOW.

After the lighting of the Grand Perspective (Terraces, Latona's Fountain and Parterre, Great Lawn, Apollo's Fountain), the North Axis (North Parterre, Dragon and Neptune Fountains, Yew and Marmousets Alleys), the façades of the North and South Wings, and the South Parterre, it is now the façade of the central building that, in 2025, has benefited from a An overhaul of their lighting, with the support of CITEOS.

Fountains and pools, statues and vegetation are enhanced by ingenious lighting installations designed by lighting designer Laurent Fachard.

Sponsors of the Night Fountains Show:

CITEOS



GROVES EXCEPTIONALLY OPEN,
LIGHT AND MUSICAL DISPLAYS, DRONE ANIMATIONS
from 8:30pm to 10:45pm

WATER DISPLAYS
from 8:30pm to 10:40pm

DRONES AND FIREWORKS FINAL SHOW - GROUPE F
from 10:50pm to 11:05pm

Château de
VERSAILLES
Spectacles

CHÂTEAU DE VERSAILLES

GROVES & FOUNTAINS

The groves of Versailles were designed during Louis XIV's reign as open air drawing rooms concealed at the heart of the wooded areas of the gardens. One went there for refreshments and light meals, to listen to music or dance. The King could satisfy his taste for gambling and performing arts in these venues intended solely for entertainment and celebrations. Decorated with fountains, vases and statues, accessed through discreet walks, these groves bring surprise and creativity within the Royal Garden.

GREAT PERSPECTIVE

In the Park of the Palace, this grandiose stretch of landscape designed by André Le Nôtre in the 1660s goes from the Palace itself (the King's Bedchamber and the Hall of Mirrors) to the extremity of the Grand Canal. Apollo, the emblematic figure of Louis XIV, is present everywhere in figurative or symbolic form.

Jean-Baptiste Lully • *Le Triomphe de l'Amour* : Ouverture
Persée, entrée des divinités infernales : Acte III scène 10
Ballets d'Alcidiane : Ouverture
Idylle sur la paix : Air pour Madame la Dauphine
Marc-Antoine Charpentier • *Offerte à deux chœurs*
Sanctus pour tous les instruments
Jean-Féry Rebel • *Les Éléments* : Caprice, Tambourins I & II
Christoph Willibald Gluck • *Les Éléments* : Ballo Sinfonia, Marche

GREAT LAWN

The Great Lawn, a vast lawn surrounded by an impressive cortege of marble statues, will be adorned with majestic flames from Groupe F, rhythmically punctuating the festive music and offering an astonishing perspective view of the Royal Garden.

LATONA'S FOUNTAIN

From the top of the steps of the Latona's Fountain, the visitor can look out over the Grand Perspective and admire, from the king's viewing point, a constellation of bubbles reflecting the day's last rays of sunshine. The statues of this recently restored fountain illustrate the legend of Diana and Apollo's mother protecting her children against the insults of the peasants of Lycia and demanding vengeance from Jupiter who changed them into frogs.

APOLLO'S FOUNTAIN

Newly restored

The final fireworks display in the fountain of Apollo's Chariot will take place at 10:50pm. Groupe F will be producing a finale visible all along the Grand Perspective, combining a fireworks display at the head of the Grand Canal and flames soaring from the Great Lawn. More than 600 drones will punctuate the evening and bring this nocturnal fairy to a close.

Jean-Baptiste Lully • *Te Deum* : Symphonie
Phaéton : Ouverture Ballet de la Nuit
Xerxès : Air pour les esclaves et singes dansants
Armide : Prélude et Passacaille
Le Bourgeois gentilhomme : Marche pour la Cérémonie des Turcs

Jean-Philippe Rameau • *Platée* : Acte I scène VI Orage
Marc-Antoine Charpentier • Marche de Triomphe pour les violons, trompettes, timbales, flûtes et hautbois



MUSICAL SEASON

Every year the Royal Opera and the Royal Chapel of Château de Versailles welcome the greatest international artists for an exceptional program of concerts, operas and ballets.

FULL PROGRAM ON OUR WEBSITE

LAST TRAINS TO PARIS

Gare Château Versailles Rive Gauche : 11:55pm*
Gare Versailles Rive Droite : 00:12am*
Gare Versailles Chantiers : 00:30am*

* Subject to change. Visit transilien.com



INFORMATION - BOOKING
+33 (0)1 30 83 78 89
www.chateauversailles-spectacles.fr

@chateauversailles.spectacles @versaillesspectacles @CVSpectacles

#GRANDESAUXNOCTURNES

Administrative address: Château de Versailles Spectacles
CS 10509 - 78008 Versailles Cedex

snctconnect

Le Parisien

RTL

france.tv



SOUTH

ORANGERY

Built by Jules Hardouin-Mansart between 1684 and 1686, it consists of a large central vaulted gallery 150 meters long, prolonged by two side galleries located under the Hundred Steps staircase. 1 055 trees in tubs stay inside the building during winter months before being welcomed by the Orangery Parterre. From June 18th to September 29th 2024, discover the artist Eva Jospin and her work *Chambre de soie* at the Eva Jospin-Versailles exhibition.

BALLROOM GROVE

The Ballroom Grove was built by Le Nôtre and the fountain engineers of Louis XIV. Strollers will be able to enjoy a surprising play of lights accompanying the favourite music of the King and the miracle of the water pouring in cascades down the rocaille steps of the amphitheatre.

Jacques Cordier • *La Bocanne primitive - La Bocanne compliquée*
Jean-Baptiste Lully • *Phaéton* : Prologue Troupe d'astrée dansante, le Roi représentant le Soleil Levant
Le Bourgeois Gentilhomme : Marche pour la Cérémonie des Turcs,
Chaconne des Scaramouches, Frivelins et Arlequins, Giordina
Michel Corrette • *Les sauvages et la Furstemberg* :
Les Sauvages, Allegro

MIRROR FOUNTAIN

Louis XIV commanda ce bassin en 1702. Dans l'esprit des fontaines de Le Nôtre, mais avec les moyens techniques modernes, des jeux d'eau et de lumière musicaux y sont présentés.

Georg Friedrich Haendel
The Coronation of King George II : Fanfares I
François Colin de Blamont
Guerre des Te Deum : Sanctus Dominus, In Te Domine speravi

KING'S GARDEN

The King's garden stands where the former Royal Island once stood, before being filled in the 19th century to house a garden planted with rare and exotic trees. Since 2025, it has also been illuminated thanks to a new lighting design imagined by Yves Caizergues.

COLONNADE GROVE

In the circular space of the Colonnade Grove designed by Jules Hardouin-Mansart, the sculptor Girardon placed one of the white marble masterpieces of Versailles. Pluto, the God of Hell, snatches Proserpine from the Earth, her mother, and carries her up into the sky, with lasers here creating unexpected shapes in the coloured smoke clouds.

Jean-Baptiste Lully • *Armide* : Passacaille
Les Amants magnifiques : Entrée d'Apollon
Le Triomphe de l'Amour : Entrée d'Apollon, Deuxième Air

GIRANDOLE AND DAUPHIN'S GROVES

In these ravishing groves, let yourself be guided through a maze of winding paths where original light installations, inspired by nature are revealed.

NORTH

NEPTUNE FOUNTAIN

The Neptune fountain was dug out in the shape of a half-circle as in the ancient Greek theatres. Armed with his trident, Neptune, the god of the sea, sends gracious spouts of water into the sky.

Christoph Willibald Gluck • *Les Éléments* : Marche
Jean-Philippe Rameau • *Platée* : Acte I scène VI Orage

THREE FOUNTAINS GROVE

Lights and fountains create a magical mystery in one of the favourite groves of Louis XIV (he is said to have designed it), completed by Le Nôtre in 1679. Shells and rocaille features decorate the five levels of fountains from which statues are excluded so that all the visitor's attention is concentrated on the water attractions.

Jean-Féry Rebel • *Les Éléments* : Air pour les violons, Chaconne
Pierre Montan-Berton l'Aîné • Nouvelle Chaconne in E minor

WATER THEATER GROVE

The grove designed by Le Nôtre was restored in 2015 by landscape architect Louis Benech and artist Jean-Michel Othoniel. The Bassin des Enfants Dorés, near the Water Theater Grove, was created by Jules Hardouin-Mansart in 1709.

APOLLO'S BATH GROVE

Designed by Hubert Robert from 1776, this grove features a pre-romantic style with a remarkable rock sheltering sculptures of Apollo and the Muses by Marsy, Guérin, Girardon and Regnaudin, recovered from Louis XIV's Grotte de Thétis.

OBELISK GROVE

The grove features a large two-level rectangular pool with water jets forming a liquid obelisk, and is animated by four water staircases. A duo of fire artists from the Cercle de Feu company will perform in this grove.

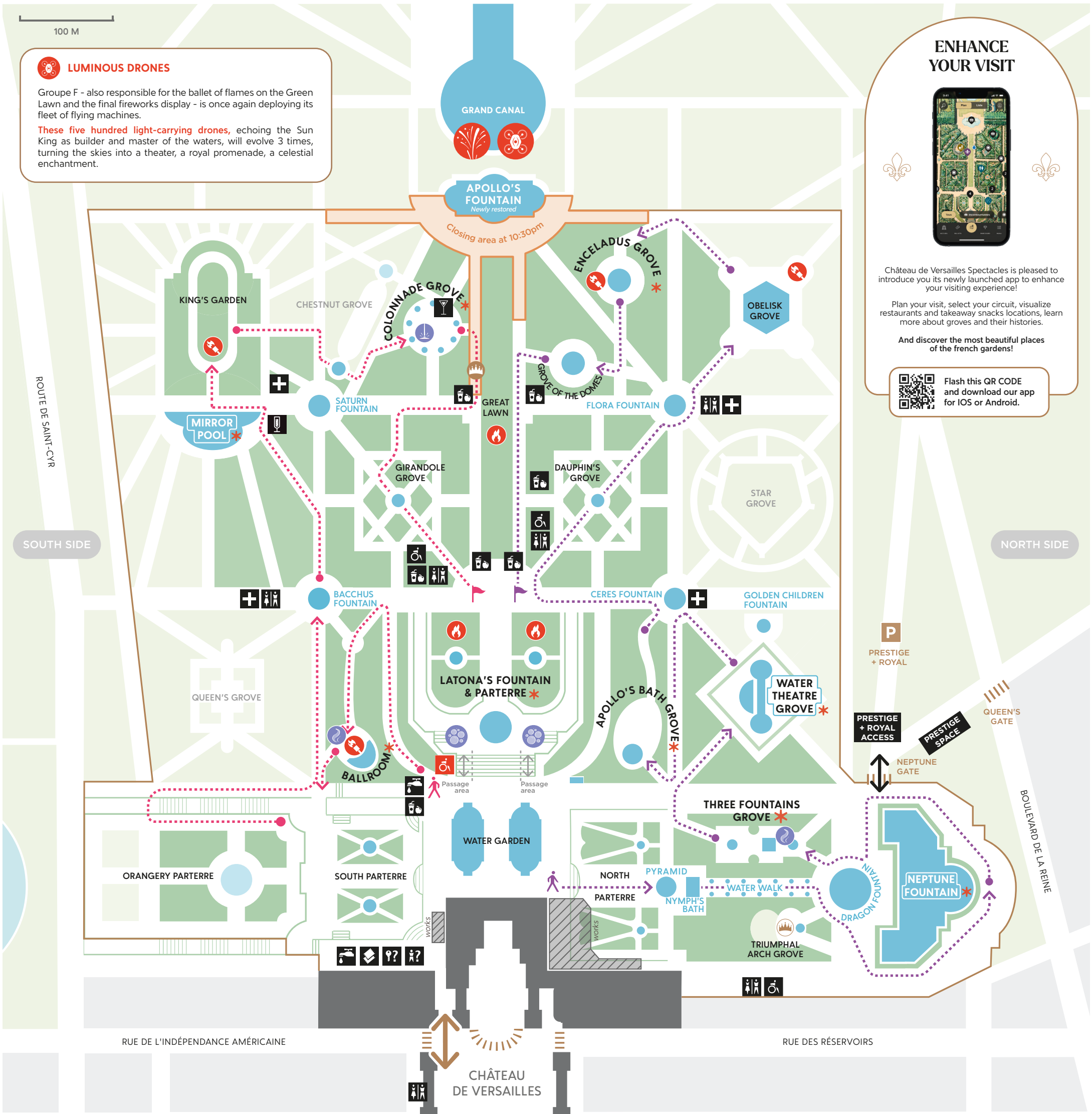
ENCELADUS GROVE

The grove designed by Le Nôtre in 1675 is home to a marvel of French Baroque sculpture: the giant Enceladus, a work in gilded lead by Marsy. It depicts Enceladus buried under rocks, punished by the gods of Olympus, in the style of the Lyrical Tragedy during the 17th century.

Jean-Féry Rebel • *Les Éléments* : Le Chaos
Jean-Baptiste Lully • *Armide* : Prélude Acte II scène V

THE DOMES GROVE

The basin contains small fountains, from which water gushes. The water flows into the channel in the parapet and then as a thin sheet of water into the basin.

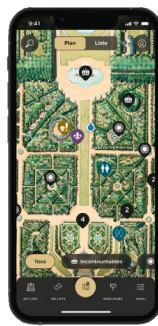


LUMINOUS DRONES

Groupe F - also responsible for the ballet of flames on the Green Lawn and the final fireworks display - is once again deploying its fleet of flying machines.

These five hundred light-carrying drones, echoing the Sun King as builder and master of the waters, will evolve 3 times, turning the skies into a theater, a royal promenade, a celestial enchantment.

ENHANCE YOUR VISIT



Château de Versailles Spectacles is pleased to introduce you its newly launched app to enhance your visiting experience!

Plan your visit, select your circuit, visualize restaurants and takeaway snacks locations, learn more about groves and their histories.

And discover the most beautiful places of the french gardens!



Flash this QR CODE and download our app for IOS or Android.

SUGGESTED WALKS

To facilitate your stroll, we suggest two circuits that will allow you to discover the gardens easily. You can also organise your stroll to suit yourself.



Suggested walk South side
Estimated time: 1h



Suggested walk North side
Estimated time: 1h30

FIREWORKS

At the end of your stroll, return to the **Grand Perspective** to watch the fireworks accompanied by 700 drones synchronized above the Apollo's Chariot fountain from **10.50pm to 11.05pm**.

*** GROVES & FOUNTAINS NOT TO BE MISSED!**

TONIGHT IN THE GARDENS

For this exceptional date, Assumption Friday, fire is in the spotlight in the Royal Gardens!

The fountains will play their part, and flames, lasers, special effects, light modules, fireworks and drones will light up the sky with a new magic.

Candles and fire artists will guide you as you stroll through the groves, discovering them as you've never seen them before...



FIRE ARTISTS
Ballroom Grove
9pm, 9:30pm and 10pm
Obelisk Grove
9pm, 9:30pm and 10pm
King's Garden
9:25pm, 9:35pm, 10:05pm and 10:15pm
Enceladus Grove
9:15pm, 9:45pm and 10:15pm



FLAMES
Green Lawn & Latona's Parterre
Between 8.30pm and 11.05pm



LIGHT AND PYROTECHNIC DRONES
Grand Canal
9:52 pm, 10:13 pm and finale at 10:50 pm
subject to change

- | | | | |
|--|--|--|---|
| | Lasers | | Free toilets |
| | Smoke | | Bar |
| | Soap bubbles | | Champagne bar |
| | Pyrotechnic show | | Snacks |
| | Royal Square Location for the firework | | Lost objets |
| | Royal Space Triumphal Arch Grove | | Lost child |
| | Location for the firework for visitors with reduced mobility | | Facilities for visitors with reduced mobility |
| | Stairs | | The Night Fountains Show, ticket office |
| | Entrance / Exit | | Rescue |
| | | | Drinking water |

NOTICE TO VISITORS

No readmission after leaving the site.

No picnics are allowed inside the paying area. It is forbidden to walk or sit on lawns or to lean on or touch statues.

The fountains' water is non-drinkable. Bathing is prohibited.

Please observe instructions given by hospitality staff.