

GROVES & FOUNTAINS not to be missed!

The Versailles groves, designed by André Le Nôtre, are small enclosed areas hidden at the heart of the wooded parts of the Château's garden. The 15 groves are decorated with fountains, vases and statues, accessed by secret paths. They brought surprise and fantasy to the Royal Garden. Louis XIV and his court went there for light meals, to listen to music or dance. The King could also enjoy gambling and the theatre in these open air drawing rooms exclusively dedicated to entertainment and amusement.

THE GRAND PERSPECTIVE

A major road link runs from east to west through the entire city of Versailles connecting the royal domain to Paris. Within the park, from the Water Garden to the Grand Canal, passing by Latona's Fountain, the Great Lawn, and Apollo's Fountain, this link designed by André Le Nôtre in the 1660s is called the Grand Perspective.

LATONA'S FOUNTAIN

The statues of this recently restored fountain illustrate the legend of Diana and Apollo's mother protecting her children against the insults of the peasants of Lycia and demanding vengeance from Jupiter who changed them into frogs. Latona's Fountain was built under Louis XIII and modified by Jules Hardouin-Mansart between 1687 and 1689. It is surrounded by the Lizard Pools.

Newly restored

APOLLO'S FOUNTAIN

Apollo's Fountain was dug under Louis XIII; Louis XIV had it decorated with the magnificent group in gilded lead, executed by Tuby, after drawings by Le Brun, representing Apollo on his chariot.

Georg Friedrich Haendel • *The Coronation of King George II*
Esprit Antoine Blanchard • *Guerre des Te Deum*
François-André Danican Philidor • *Messe du Roi Soleil*
Jean-Baptiste Lully • *Phaëton*

BALLROOM

Ballroom was designed and laid out by Le Nôtre between 1680 and 1685 and is the only grove to have survived in its original condition until today. It is decorated with a semicircular cascade adorned with millstones and seashells brought back from the Indian Ocean and the Red Sea by the Royal Navy.

André Campra • *L'Europe galante*
Jean-Jacques Rousseau • *Le Devin du village*
Jean-Baptiste Lully • *Phaëton*

MIRROR POOL

Louis XIV commissioned the Mirror Pool in 1702. The Crystal Group shows rhythmical musical fountain displays, to the sound of music by Handel and Blamont, in the spirit of Le Nôtre, but with the latest technical methods.

Georg Friedrich Haendel • *The Coronation of King George II*
François Colin de Blamont • *Guerre des Te Deum*

COLONNADE GROVE

With its circular peristyle punctuated by 32 ionic columns, Colonnade is more of a "mineral" than a "green" grove and was designed by Jules Hardouin-Mansart in 1684.

Michel-Richard de Lalande, François Couperin
et Jean-Baptiste Lully • *Messe du Roi Soleil*
Jean-Baptiste Lully • *Phaëton*

ENCELADUS GROVE

The grove shows the Titan Enceladus, punished for his pride by the Mount Olympus gods. This composition by Le Nôtre was restored in 1997.

Marc-Antoine Charpentier • *Les Arts Florissants*
André Campra • *L'Europe galante*

APOLLO'S BATH GROVE

In 1776, this pre-romantic grove, landscaped by the painter Hubert Robert, was laid out in the fashionable style of the "folly" gardens of the time, with its surprising rock sheltering the three magnificent groups of marble sculptures of Apollo and the Nymphs (recovered from the Tethys Grotto, built by Louis XIV), created by Marsy, Guérin, Girardon and Regnaudin.

WATER THEATRE GROVE

This grove was designed by André Le Nôtre between 1671 and 1674; it was restored in 2015 by the landscape gardener Louis Benech for the contemporary garden and the sculptor Jean-Michel Othoniel for the sculpture-fountains. Situated close to the Water Theatre Grove, the Golden Children Fountain was created in 1709 by Jules Hardouin-Mansart. After major restoration works it reopened in 2017.

NEPTUNE FOUNTAIN

Neptune Fountain was designed and dug out in the shape of a hemicycle as in antique theatres. Armed with his trident, Neptune, the ocean god, sends graceful sprays of water up into the sky.

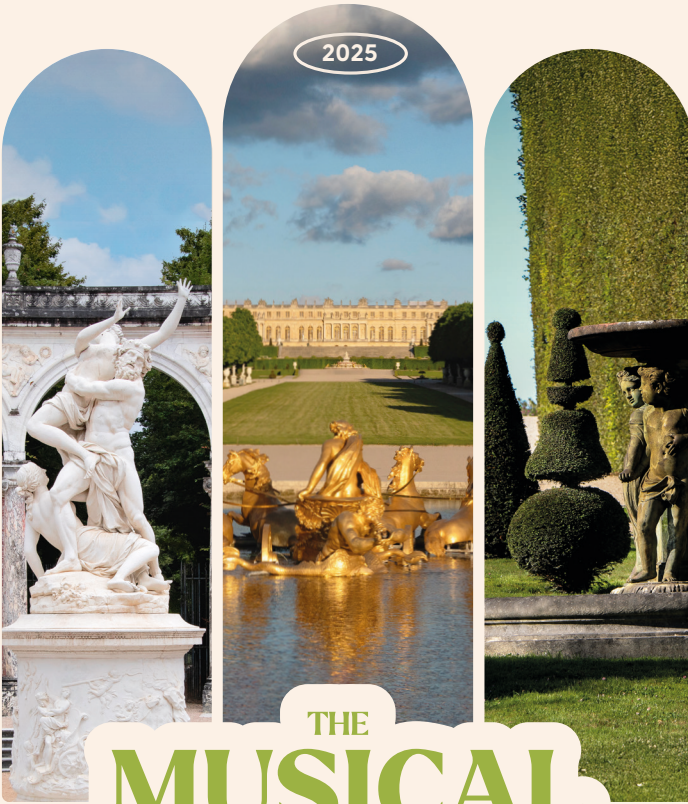
Georg Friedrich Haendel • *The Coronation of King George II*
François Colin de Blamont • *Guerre des Te Deum*
Jean-Baptiste Lully • *Te Deum*

THREE FOUNTAINS GROVE

Louis XIV quite probably designed this grove himself, but it was his faithful gardener Le Nôtre who supervised its execution from 1677 to 1679. A simple decor of lawn, marble, rockeries and shells, also remarkable because of the total absence of statues, gives it an elegant and graceful atmosphere.

Francesco Cavalli • *Missa 1660*

CHÂTEAU DE VERSAILLES



THE MUSICAL GARDENS

STROLL IN THE GARDENS OF THE CHÂTEAU DE VERSAILLES

GROVES EXCEPTIONALLY OPEN
FROM 9AM TO 7PM

MUSICAL DISPLAYS
FROM 10AM TO 7PM

WATER DISPLAY TO THE MIRROR POOL
EVERY 10 MINUTES
TO THE NEPTUNE FOUNTAIN
EVERY 15 MINUTES

AND TO THE WATER THEATRE GROVE
CONTINUOUSLY FROM 10AM TO 7PM

Château de
VERSAILLES
Spectacles


CHÂTEAU DE VERSAILLES

The Night FOUNTAINS SHOW

7TH JUNE TO 20TH SEPTEMBER

2025

EXCEPTIONAL DATES:

NATIONAL DAY - July 14th
THE FIRE NIGHT FOUNTAINS SHOW - August 15th
THE ELECTRO NIGHT FOUNTAINS SHOW - September 20th
From 8:30pm to 11:05pm

THE ROYAL SERENADE OF THE HALL OF MIRRORS

Do not miss this amazing tour and performances in the exceptional environment of Château de Versailles' royal residence!

Saturdays from June 7th to September 13th, Monday July 14th and Friday August 15th 2025.

5 shows from 6:30pm to 7:50pm

MUSICAL SEASON

Every year the Royal Opera and the Royal Chapel of Château de Versailles welcome the greatest international artists for an exceptional program of concerts, operas and ballets.

FULL PROGRAM ON OUR WEBSITE



INFORMATION - BOOKING
+33 (0)1 30 83 78 89
en.chateauversailles-spectacles.fr

Administrative address: Château de Versailles Spectacles
CS 10509 - 78008 Versailles Cede

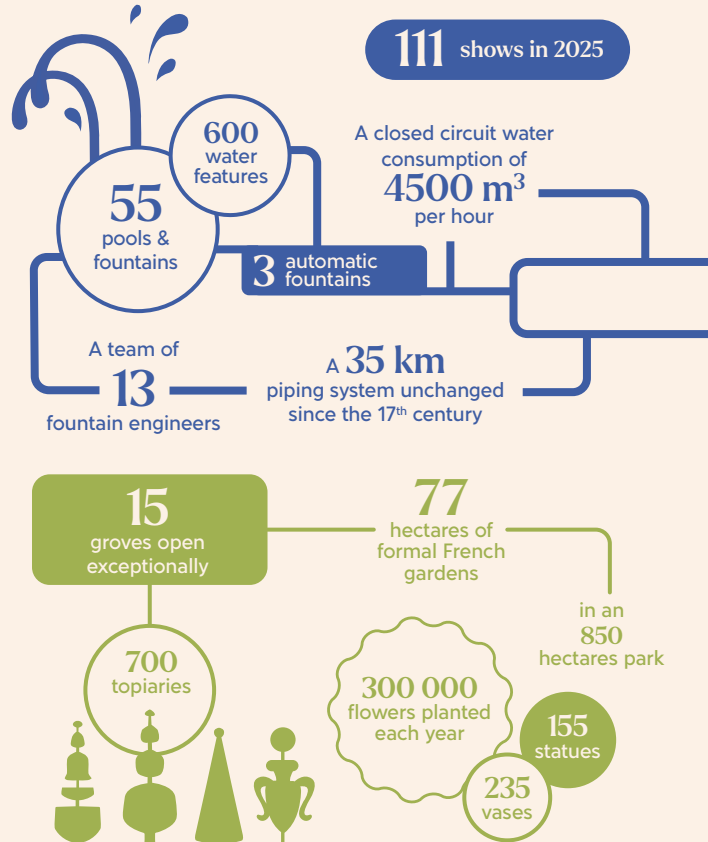


snfconnect



Back: ©Nicolas Chavance - Cover: ©Christian Milet, ©Thomas Garnier, ©Virginie Marty. Do not litter.

THE MUSICAL GARDENS SHOW IN FIGURES

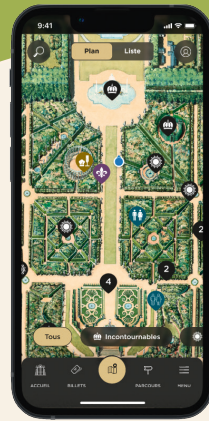


THE GROVES FROM THE SKY



View over the Great Lawn, the Apollo's fountain and the Grand Canal. Partial view of the Colonnade Grove (on the left), the Enceladus Grove and the Grove of the Domes (on the right).

ENHANCE YOUR VISIT !



Château de Versailles Spectacles is pleased to introduce you its newly launched app to enhance your visiting experience!

Plan your visit, select your circuit, visualize restaurants and takeaway snacks locations, learn more about groves and their histories.

And discover the most beautiful places of the french gardens!



Flash this QR CODE and download our app for IOS or Android.

CONTINUE THE EXPERIENCE



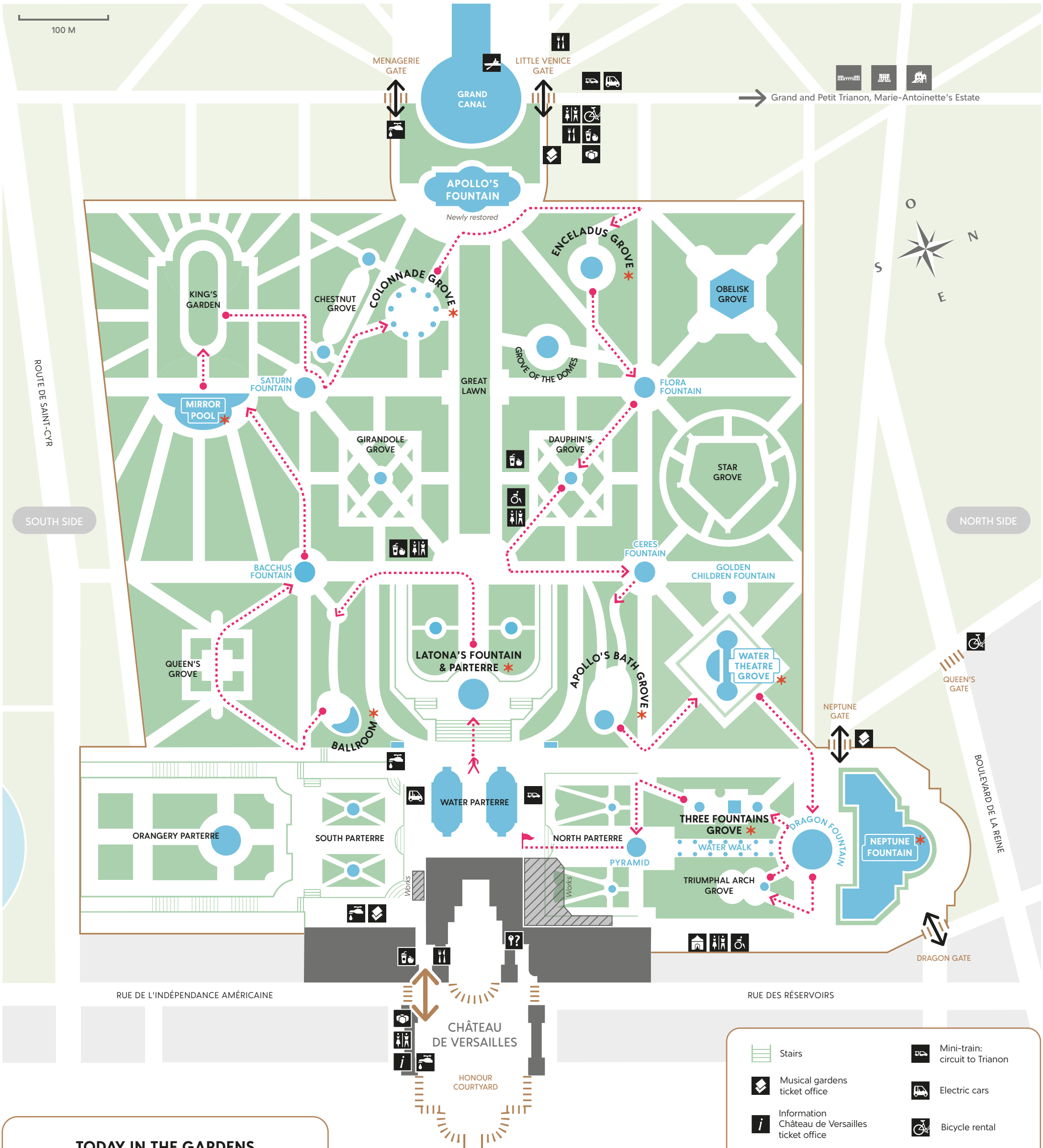
The Fountains Show at home!

Rediscover the musical program of the Fountains Show of Versailles in the collection Château de Versailles Spectacles. Find out all CD and DVD on operaroyal-versailles.fr/en

FOLLOW US ON THE SOCIAL NETWORKS

@chateauversailles.spectacles
@CVSpectacles @versaillesspectacles

#MUSICALGARDENS



TODAY IN THE GARDENS

GROVES EXCEPTIONALLY OPEN
9am > 7pm

MUSICAL DISPLAYS
10am > 7pm

WATER DISPLAYS
10am > 7pm



AUTOMATIC FOUNTAINS

Every 10 minutes: Mirror Pool
Every 15 minutes: Neptune Fountain
Continuously: Water Theater Grove

Water display on garden schedules may change. Please see information at the garden's entrances or in our website.

Early closure at 5:30pm on Tuesday October 28th,
Wednesday October 29th, Thursday October 30th,
and Friday October 31st.

SUGGESTED WALK



Estimated time: 2h30

*** GROVES & FOUNTAINS
NOT TO BE MISSED**

- | | |
|---|--------------------------------|
| Stairs | Mini-train: circuit to Trianon |
| Musical gardens ticket office | Electric cars |
| Information Chateau de Versailles ticket office | Bicycle rental |
| Reception hall (schools) | Rowing boats |
| Entrance / Exit | Restaurants |
| Free toilets | Snacks |
| Facilities for visitors with reduced mobility | Lost and found |
| Souvenirs Book shop | Drinking water |

NOTICE TO VISITORS

Keep your ticket with you and show it at control points.

No picnics are allowed inside the paying area.
It is forbidden to walk or sit on lawns or to lean on or touch statues.

The fountains' water is non-drinkable. Bathing is prohibited.
Please observe instructions given by hospitality staff.